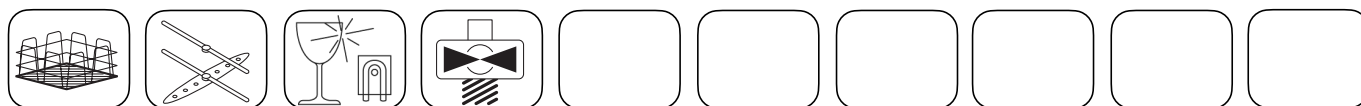


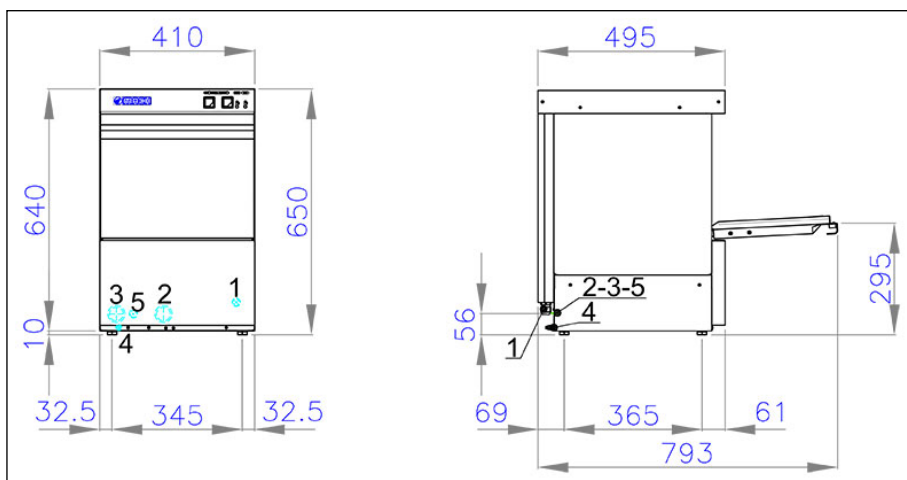
- | | |
|---|------------------------------|
| 1. Power cable entry 3x1,5
(230Vx1-50Hz) | 3. Water loading pipe Ø3/4"G |
| 2. Water drain pipe Ø30 Hmax=13cm. | 4. Equipotential |
| | 5. Dosing pumps entry |



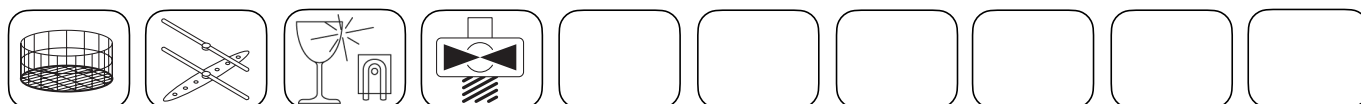
- Single wall.
- Tank with rounded corners.
- Fully automatic operation with electromechanical controls.
- Magnetic microswitch to cut out operation of the appliance when door is opened.
- Useful washing height 25 cm.
- Square basket 35x35 cm. (supplied with 2 baskets for glasses, 1 saucer insert, 1 cutlery holder).
- Independent lower washing and rinsing arms (upper rinsing arm only).
- Washing cycle time 150 seconds (capacity 800 pz/h).

- Standard built-in rinse-aid pump.
- Built-in insulated boiler made in AISI 304L stainless steel.
- Boiler and tank heating through thermostatically protected armoured heating elements (in exchange).
- Tank capacity lt. 9,5 and boiler capacity lt. 4,0.
- Water consumption per cycle lt. 2,2 - Water pressure input ATE 1,5-3,0 - Max temperature of inlet water 50°C.
- Tank heating element kW 1,4 - Boiler heating element kW 3,0.
- Washing pump power Hp 0,27.
- Noise level at 1 mt. < 70 dbA.
- Total power kW 3,23.

Note

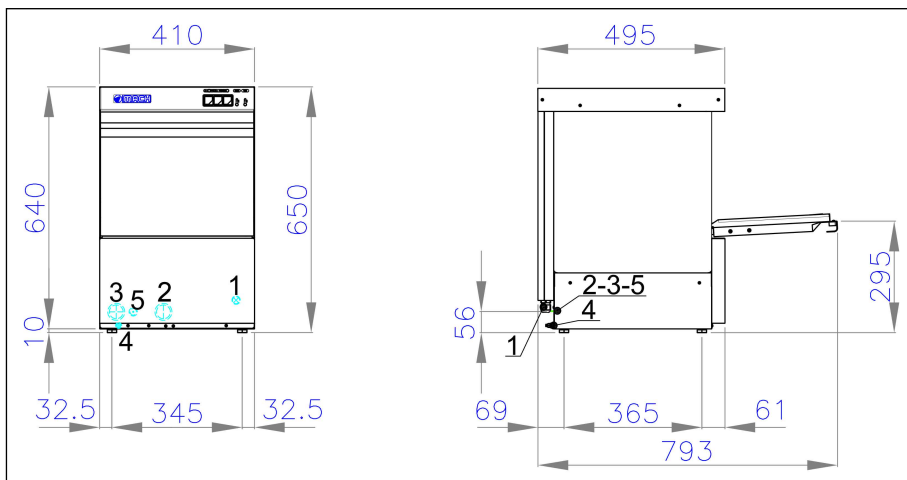


- | | |
|---|------------------------------|
| 1. Power cable entry 3x1,5
(230Vx1-50Hz) | 3. Water loading pipe Ø3/4"G |
| 2. Water drain pipe Ø30 Hmax=13cm. | 4. Equipotential |
| | 5. Dosing pumps entry |



- Single wall.
- Tank with rounded corners.
- Fully automatic operation with electromechanical controls.
- Magnetic microswitch to cut out operation of the appliance when door is opened.
- Useful washing height 25 cm.
- Round basket Ø34 cm. not swivelling ((supplied with 2 baskets for glasses and 1 support frame for round basket, 1 saucer insert, 1 cutlery holder).
- Independent lower washing and rinsing arms (upper rinsing arm only).
- Washing cycle time 150 seconds (capacity 800 pz/h).
- Standard built-in rinse-aid pump.
- Built-in insulated boiler made in AISI 304L stainless steel.
- Boiler and tank heating through thermostatically protected armoured heating elements (in exchange).
- Tank capacity lt. 9,5 and boiler capacity lt. 4,0.
- Water consumption per cycle lt. 2,2 - Water pressure input ATE 1,5-3,0 - Max temperature of inlet water 50°C.
- Tank heating element kW 1,4 - Boiler heating element kW 3,0.
- Washing pump power Hp 0,27.
- Noise level at 1 mt. < 70 dbA.
- Total power kW 3,23.

Note



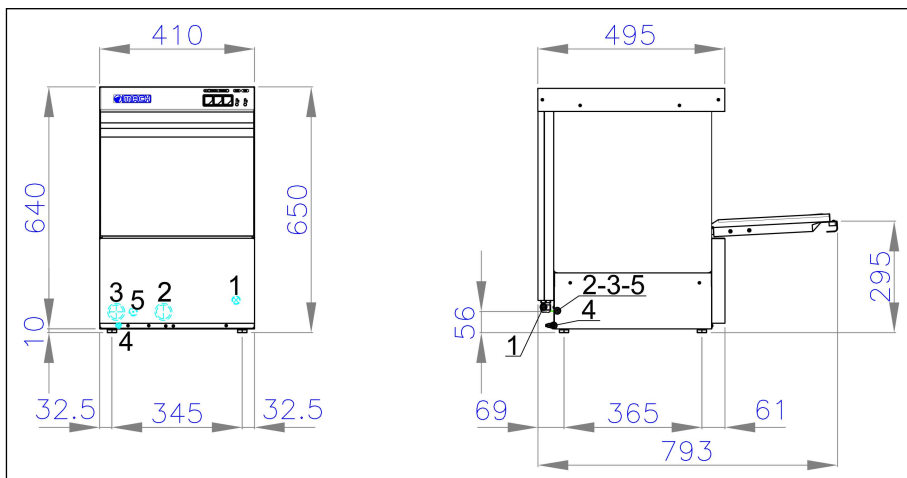
- | | |
|---|------------------------------|
| 1. Power cable entry 3x1,5
(230Vx1-50Hz) | 3. Water loading pipe Ø3/4"G |
| 2. Water drain pipe Ø30 Hmax=13cm. | 4. Equipotential |
| | 5. Dosing pumps entry |



- Single wall.
- Tank with rounded corners.
- Fully automatic operation with electromechanical controls.
- Magnetic microswitch to cut out operation of the appliance when door is opened.
- Useful washing height 23,5 cm.
- Square basket 35x35 cm. (supplied with 2 baskets for glasses, 1 saucer insert, 1 cutlery holder).
- Independent lower/upper washing and rinsing arms.
- Timed manual cold rinse.
- Washing cycle time 150 seconds (capacity 800 pz/h).

- Standard built-in rinse-aid pump.
- Built-in insulated boiler made in AISI 304L stainless steel.
- Boiler and tank heating through thermostatically protected armoured heating elements (in exchange).
- Tank capacity lt. 9,5 and boiler capacity lt. 4,0.
- Water consumption per cycle lt. 2,2 - Water pressure input ATE 1,5-3,0 - Max temperature of inlet water 50°C.
- Tank heating element kW 1,4 - Boiler heating element kW 3,0.
- Washing pump power Hp 0,27.
- Noise level at 1 mt. < 70 dbA.
- Total power kW 3,23.

Note



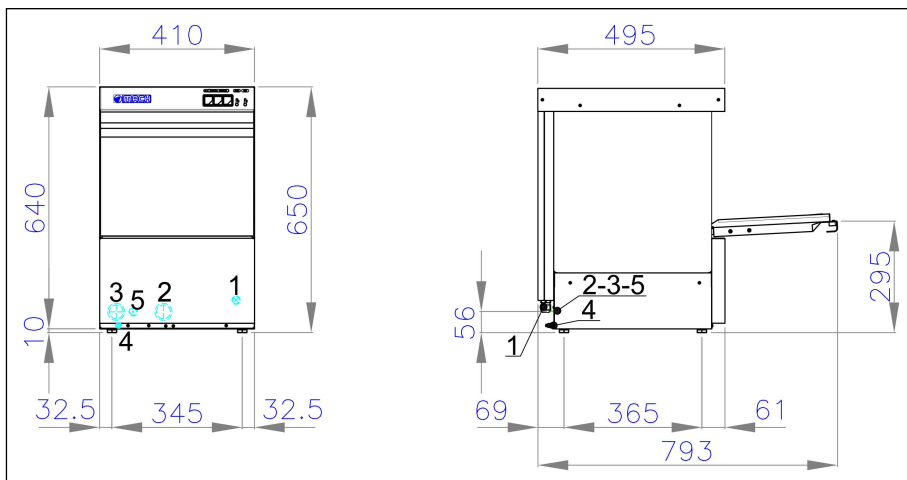
- | | |
|---|------------------------------|
| 1. Power cable entry 3x1,5
(230Vx1-50Hz) | 3. Water loading pipe Ø3/4"G |
| 2. Water drain pipe Ø30 Hmax=13cm. | 4. Equipotential |
| | 5. Dosing pumps entry |



- Single wall.
- Tank with rounded corners.
- Fully automatic operation with electromechanical controls.
- Magnetic microswitch to cut out operation of the appliance when door is opened.
- Useful washing height 23,5 cm.
- Round basket Ø34 cm. not swivelling ((supplied with 2 baskets for glasses and 1 support frame for round basket, 1 saucer insert, 1 cutlery holder).
- Independent lower/upper washing and rinsing arms.
- Timed manual cold rinse
- Washing cycle time 150 seconds (capacity 800 pz/h).

- Standard built-in rinse-aid pump.
- Built-in insulated boiler made in AISI 304L stainless steel.
- Boiler and tank heating through thermostatically protected armoured heating elements (in exchange).
- Tank capacity lt. 9,5 and boiler capacity lt. 4,0.
- Water consumption per cycle lt. 2,2 - Water pressure input ATE 1,5-3,0 - Max temperature of inlet water 50°C.
- Tank heating element kW 1,4 - Boiler heating element kW 3,0.
- Washing pump power Hp 0,27.
- Noise level at 1 mt. < 70 dbA.
- Total power kW 3,23.

Note



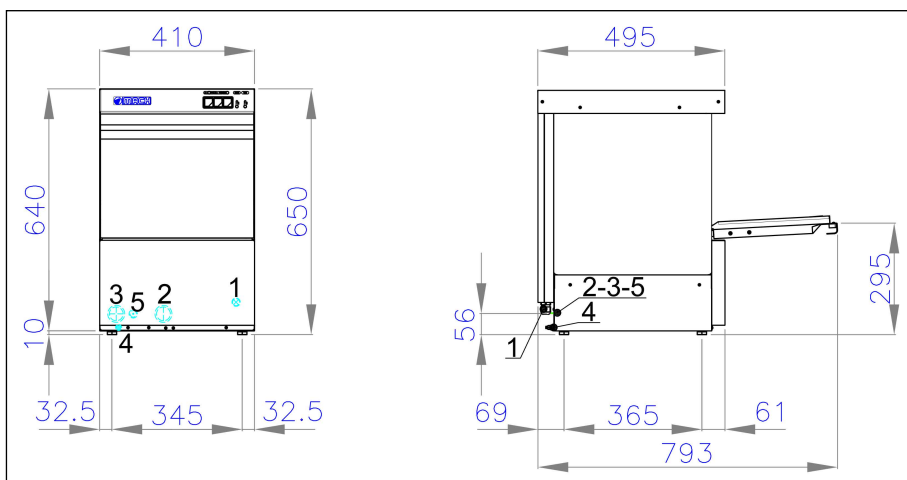
- | | |
|---|------------------------------|
| 1. Power cable entry 3x1,5
(230Vx1-50Hz) | 3. Water loading pipe Ø3/4"G |
| 2. Water drain pipe Ø30 Hmax=13cm. | 4. Equipotential |
| | 5. Dosing pumps entry |



- Double wall.
- Tank with rounded corners.
- Fully automatic operation with electromechanical controls.
- Magnetic microswitch to cut out operation of the appliance when door is opened.
- Useful washing height 23,5 cm.
- Square basket 35x35 cm. (supplied with 2 baskets for glasses, 1 saucer insert, 1 cutlery holder).
- Independent lower/upper washing and rinsing arms.
- Timed manual cold rinse
- Washing cycle time 150 seconds (capacity 800 pz/h).

- Standard built-in rinse-aid pump.
- Built-in insulated boiler made in AISI 304L stainless steel.
- Boiler and tank heating through thermostatically protected armoured heating elements (in exchange).
- Tank capacity lt. 9,5 and boiler capacity lt. 4,0.
- Water consumption per cycle lt. 2,2 - Water pressure input ATE 1,5-3,0 - Max temperature of inlet water 50°C.
- Tank heating element kW 1,4 - Boiler heating element kW 3,0.
- Washing pump power Hp 0,27.
- Noise level at 1 mt. < 70 dbA.
- Total power kW 3,23.

Note



- | | |
|---|------------------------------|
| 1. Power cable entry 3x1,5
(230Vx1-50Hz) | 3. Water loading pipe Ø3/4"G |
| 2. Water drain pipe Ø30 Hmax=13cm. | 4. Equipotential |
| | 5. Dosing pumps entry |



- Double wall.
- Tank with rounded corners.
- Fully automatic operation with electromechanical controls.
- Magnetic microswitch to cut out operation of the appliance when door is opened.
- Useful washing height 23,5 cm.
- Round basket Ø34 cm. not swivelling ((supplied with 2 baskets for glasses and 1 support frame for round basket, 1 saucer insert, 1 cutlery holder).
- Independent lower/upper washing and rinsing arms.
- Timed manual cold rinse
- Washing cycle time 150 seconds (capacity 800 pz/h).

- Standard built-in rinse-aid pump.
- Built-in insulated boiler made in AISI 304L stainless steel.
- Boiler and tank heating through thermostatically protected armoured heating elements (in exchange).
- Tank capacity lt. 9,5 and boiler capacity lt. 4,0.
- Water consumption per cycle lt. 2,2 - Water pressure input ATE 1,5-3,0 - Max temperature of inlet water 50°C.
- Tank heating element kW 1,4 - Boiler heating element kW 3,0.
- Washing pump power Hp 0,27.
- Noise level at 1 mt. < 70 dbA.
- Total power kW 3,23.

Note